



INTELLICROSS™

*TouchFree™ add-on for IntelliCross™ APS
protects pedestrians against pathogens*



Order part no. **PLS001384**



Sample signage text may vary according to local by-laws. Also shown near bottom, redundant sensors (2) with a recessed design to prevent vandalism.

FEATURES

- **Evolutionary PPE – protection for pedestrians**
- **Simple activation through 3D TouchFree™ gesture recognition**
- **Lowest cost upgrade solution!**
- **Easy field upgradability** (approximately 5 minutes)
- **Plugs into all existing IntelliCross™ buttons**
- **Tamper resistant & fault tolerant**
- **Protects against false triggering**
- **Over-the-air firmware update**
- **Wireless IntelliCross™ configuration**



Covid-Safe

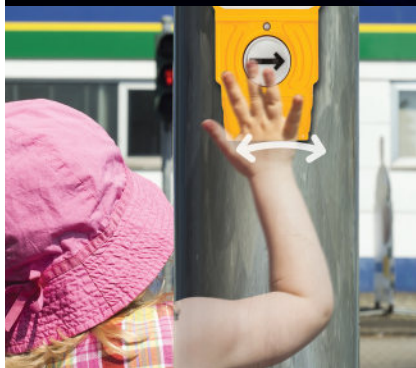
HIGHLIGHTS

Button accessory/upgrade

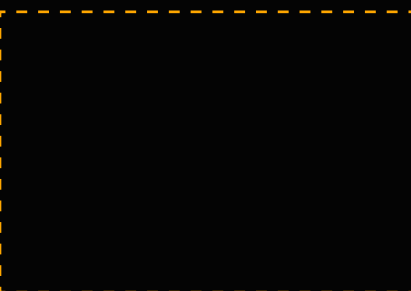
- Whole button replacement not required
- **3D gesture recognition**
 - Detects object (hand) waving motion in three dimensions (axis)
 - Avoids false calls from close proximity 'waiting' or 'passing' pedestrians
 - Default of 1 to 15cm (0.5 to 6 inch) detection range. Adjustable through built-in web app. Up to 30cm (12")
 - Simple presence detection available as a configuration setting.
 - Works with all colors, skin and material types
 - No adverse sun effects, uv-resistant
 - Capable of wireless OTA firmware update for future enhancements.
 - Integration with mobile applications for remote activation by pedestrians or bicycles
- Built-in programmable radio. Includes; wi-fi (2.4GHz), Bluetooth 4.2, upgradable to 5.0
- Failsafe management includes two sensors (only one required). If one sensor fails, the other will work independently. If both sensors fail the button can be activate with the Piezo button (which is always available)
- Sensor will operate in extreme weather conditions and dirt and grime
- Built-in wireless encryption security
 - Wi-fi remains normally off unless activated through secure means



Non-APS TouchFree™ button version available
Order part no. **PLS001724**



RESSELLER



For more information contact your local authorised distributor or Novax at:

Novax Industries Corporation

sales@novax.com / support@novax.com

1.866.977.4277 Toll Free / 1.604.525.5644 Direct

HIGHLIGHT (continued)

Wireless OTA (Over the Air)

- Device customization from your mobile device
- Firmware updates for future enhancements

Failsafe Management

- Includes two sensors for redundancy, piezo button not affected.

Superior Operational Resilience

- All weather operation. UV-protected (not affected by snow, rain)
- Object agnostic. Not affected by color or typical material type

FUTURE ENHANCEMENTS

Bicycle Detection

- Mobile app for programming detection distance
- Directional detection (detects direction of movement, i.e. left to right, right to left)

Pedestrian Mobile Interface

- Mobile application for automatic button press to enhance interface with special needs pedestrians
- Perimeter sense activation

Product Features

Wi-Fi	802.11 b/g/n
Wi-Fi Security	Wi-fi protected access (WPA)/WPA2/WPA2-Enterprise
Bluetooth	Compliant with Bluetooth 5.0 and BLE specification

Electrical Specification

Voltage Range	12Vdc (nominal) powered from IntelliCross board
---------------	---

Touch-Free Sensor

Detection Range	Default max (detection) Setting: 15cm (6 inches). Minimum distance 1cm (~0.5") Configurable maximum 3 to 30cm (~1 to 12 inches)
Detection Type	3D TouchFree gesture recognition ¹ , or Steady Presence. (Default= 3D TouchFree). Adjustable Max timing 1.0 to 3.0 sec. Default <= 2sec. Increments = 0.1 sec. Min detection time = 0.5 sec.
Fault Management	Dual sensors for redundant failsafe operation. Tamper-resistant protection "NO constant-callout" (for sensor blocking or physical contact) Gesture recognition protects against false triggering from passing pedestrians
Detection Materials	Detects all skin types, fabrics, of all colors.
Environmental Protection	Works under darkness and direct sunlight, UV protection. Dirt, dust, snow, and rain tolerant.

Mechanical

Mount Style	Dual row front plug-in
Physical Size	Approx. 80.39mm x 30.48 mm x 10 mm (3.2 x 1.2 x 0.4 inches)

Environmental Range

Operating Temperature	-34°C to +74°C (-29.2°F to +165°F)
Storage Temperature	-40°C to +85°C (-40°F to +185°F)

Standards

UL	94V-0 rated
FCC	Approved device
NEMA	NEMA TS2-2003 temperature and humidity
NEMA	TS2-2003 mechanical shock and vibration
NEMA	TS2-2003 transient voltage protection
Caltrans	Caltrans TEES2009 temperature and humidity

1. 3D TouchFree detects actual hand waving movement in three dimensions.